



## COMPACT HIFLOW<sup>™</sup> LAMELLA SEPARATOR FOR MOURA WTP

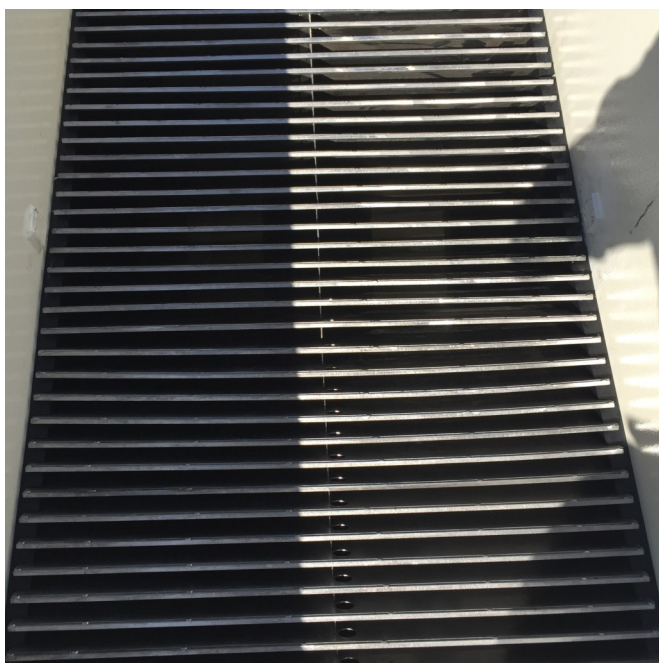


The Moura WTP processes water from the Dawson River. It provides drinking water to 2300 people.

In 2016 the plant was upgraded and Hydroflux Epcó supplied the pre-treatment with HiFlow<sup>™</sup> Lamella Separators.

Raw water from the Dawson River is treated with a coagulant and flocculant upstream of the HiFlow<sup>™</sup> units. Flocculators were also provided as part of the package.

Two HiFlow<sup>™</sup> units were provided, each with a capacity of 26 L/s.



HiFlow<sup>™</sup> was provided with stainless steel plate packs for this application as it was treating potable water.

The main tank was fabricated from mild steel and painted internally and externally. Multiple sludge hoppers were provided for sludge extraction which results in a shorter tank.

Item	Value
Capacity	26 L/s per unit
Process	Raw Water Treatment
Plate Pack Angle	60 deg
Plate Thickness	1.5mm
Plate Material	316SS
Sludge Removal	Multiple Hoppers
Sludge Mechanism	VeeMax <sup>®</sup>
Year	2016

Each sludge hopper was fitted with a mechanical scraper to provide efficient and reliable sludge removal, without dead zones.

HiFlow<sup>™</sup> is design and fabricated in Australia and is available in a number of capacities that suit municipal, industrial and mining applications.

**HiFlow<sup>™</sup>**

Level 26, 44 Market Street  
Sydney, NSW 2000  
www.hydrofluxepco.com.au  
e: info@hydrofluxepco.com.au

**1300 417 697**

EXCLUSIVE AGENTS FOR



**AEROSTRIP<sup>®</sup>**  
fine bubble diffusers



A member of the HYDROFLUX Group



ISO 9001: 2015  
ISO 14001: 2015  
OHSAS 18001: 2007  
AS/NZS 4801: 2001